

How Healthy are North Carolina's Mothers and Babies?

**HHS Joint Appropriations Subcommittee
March 18, 2015**

**Dorothy Cilenti, DrPH, MPH, MSW
Clinical Assistant Professor
Department of Maternal and Child Health**



UNC
GILLINGS SCHOOL OF
GLOBAL PUBLIC HEALTH

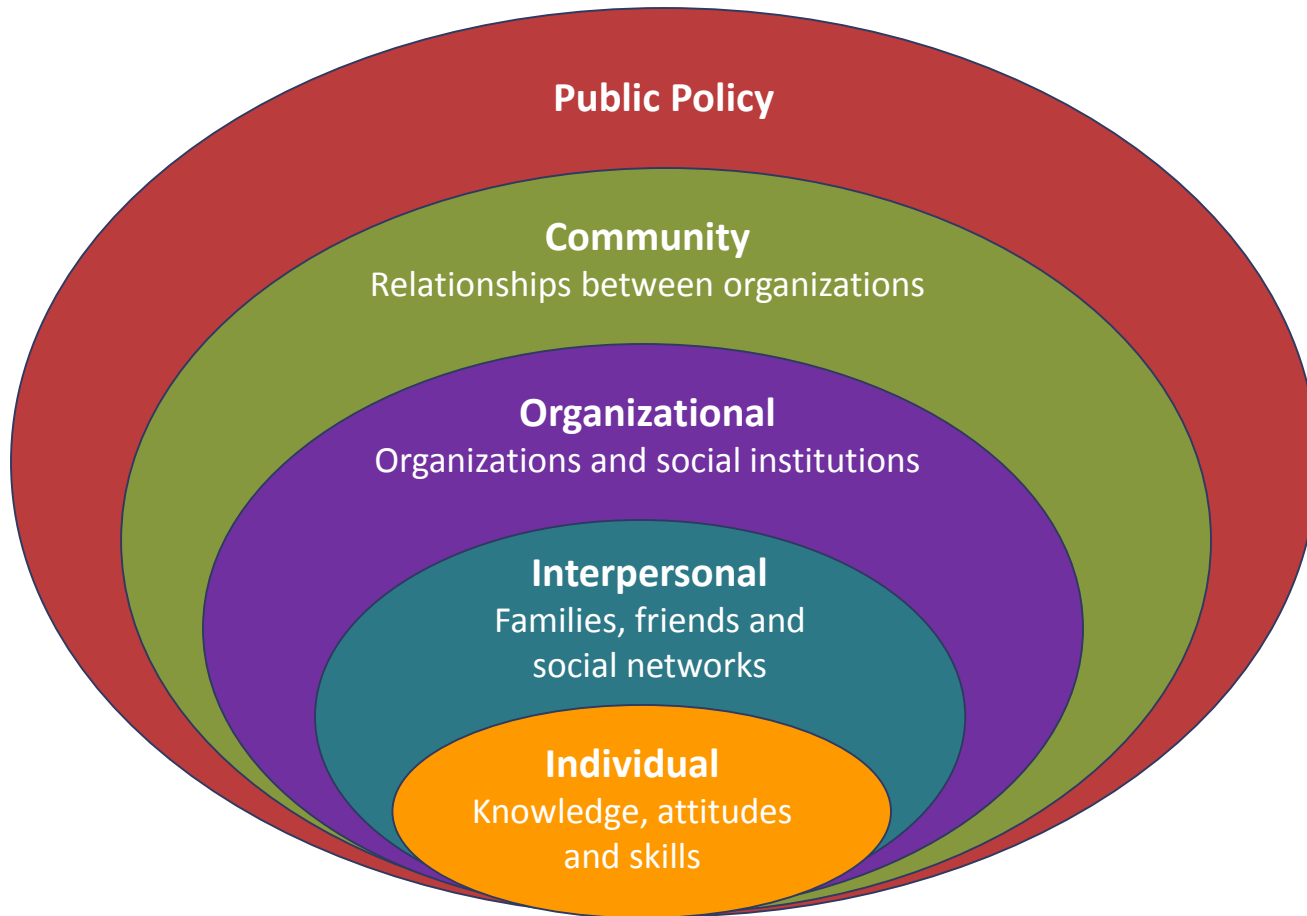
Overview

- **Present data on key health and well-being indicators for NC pregnant women and infants**
- **Identify areas where investments in maternal and infant health and well-being may be sustained**

Goals

- **All babies born with the same chance for a healthy and long life**
- **Strong families and communities to support parents and infants during the first year of life**
- **Optimal health for all mothers before pregnancy and after delivery**

Socio-Ecological Model



Snapshot of North Carolina Mothers and Babies, 2013

118,983

Total number of births

58.6%

Births to married women

2,062

Number of low-weight babies

49.6%

Women were obese or overweight before giving birth

84%

Women ages 18-34 giving birth

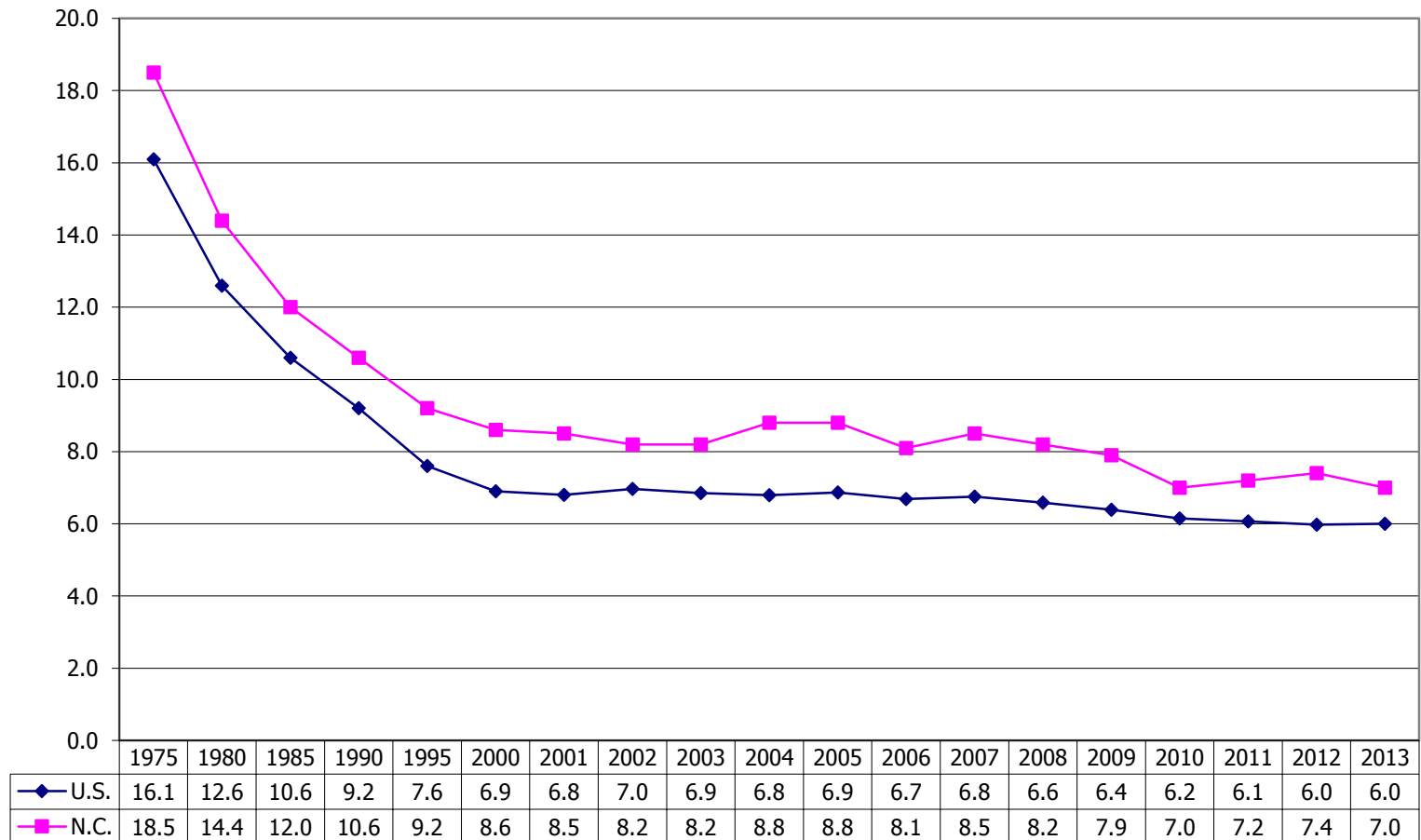
20,282

Babies born to mothers with less than a high school education

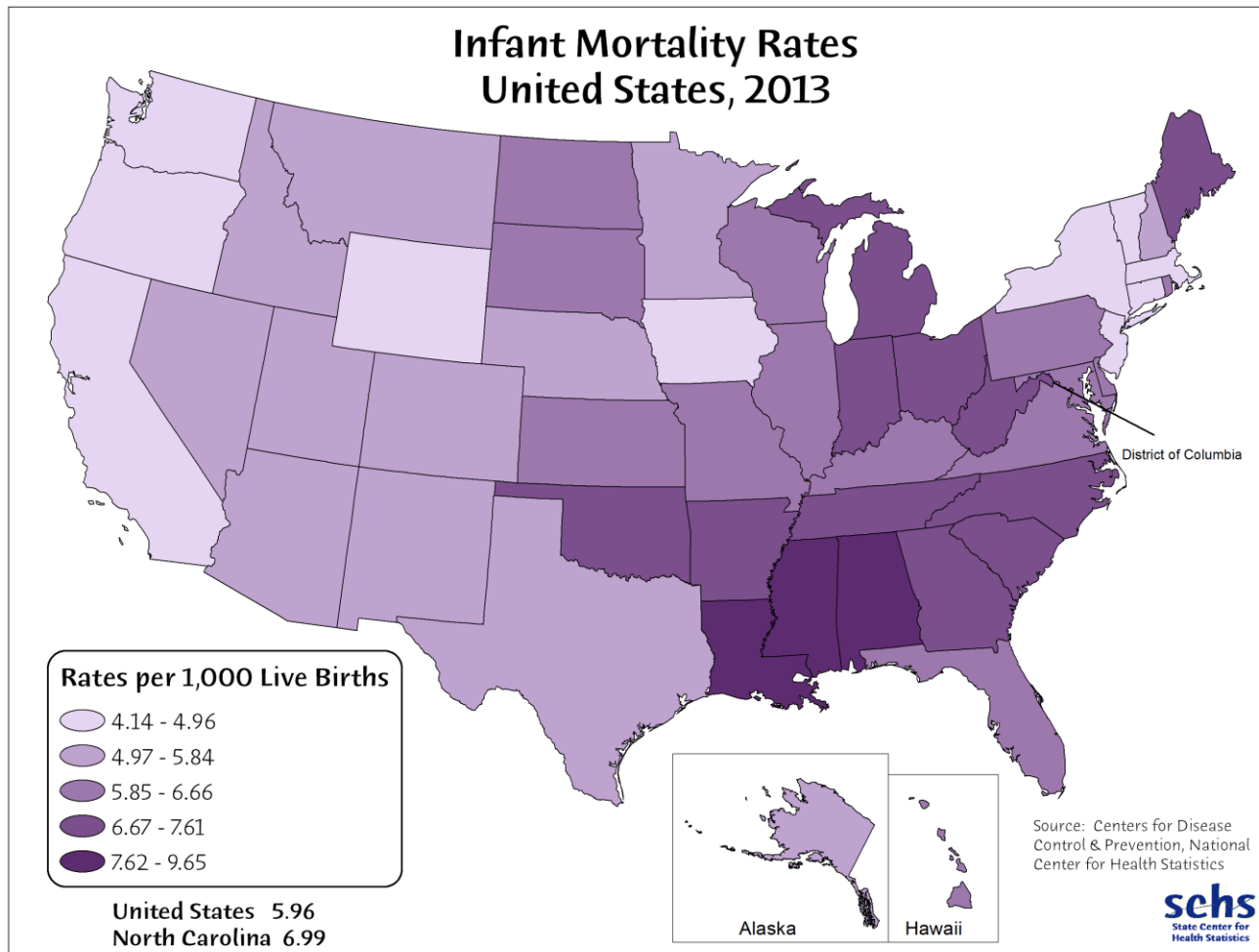


INFANT MORTALITY

Infant Mortality Rates:1975-2013



National Infant Mortality Rates, 2013

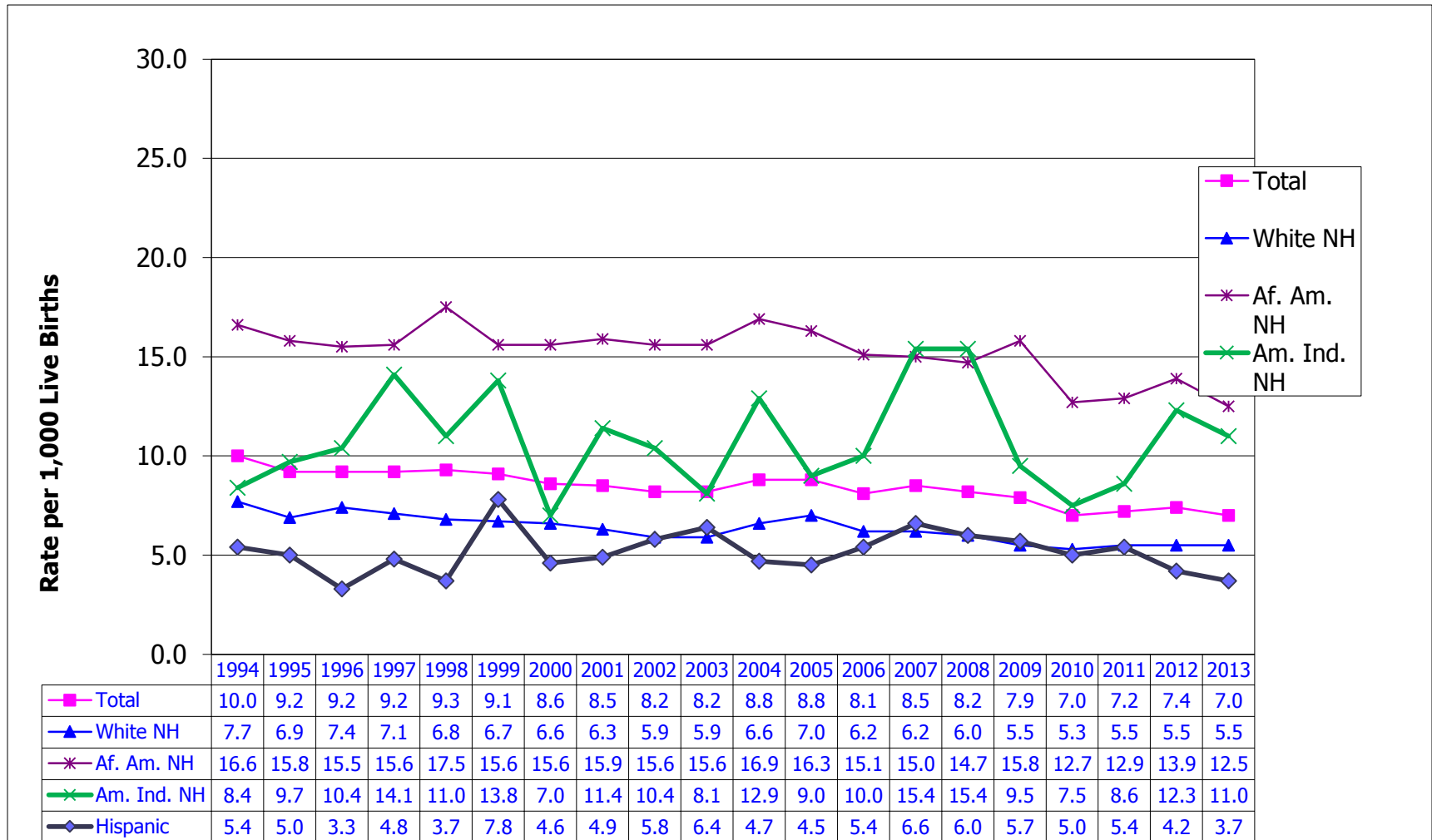


2013 U.S. Infant Mortality Rate Rankings

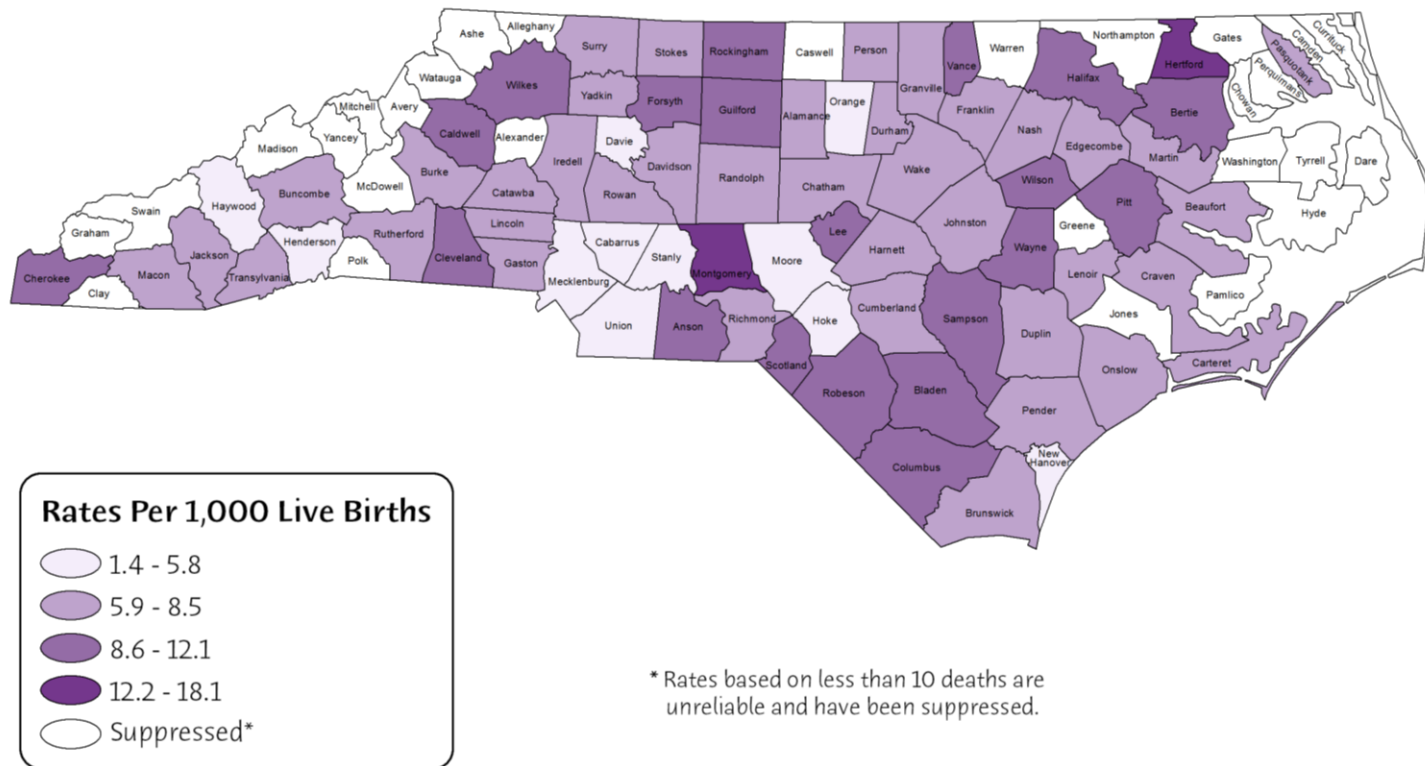
Rank	State
1	Mississippi
2	Louisiana
3	Alabama
4	Arkansas
5	West Virginia
6	Ohio
7	Indiana
8 (tie)	Maine
	Michigan
10	North Carolina



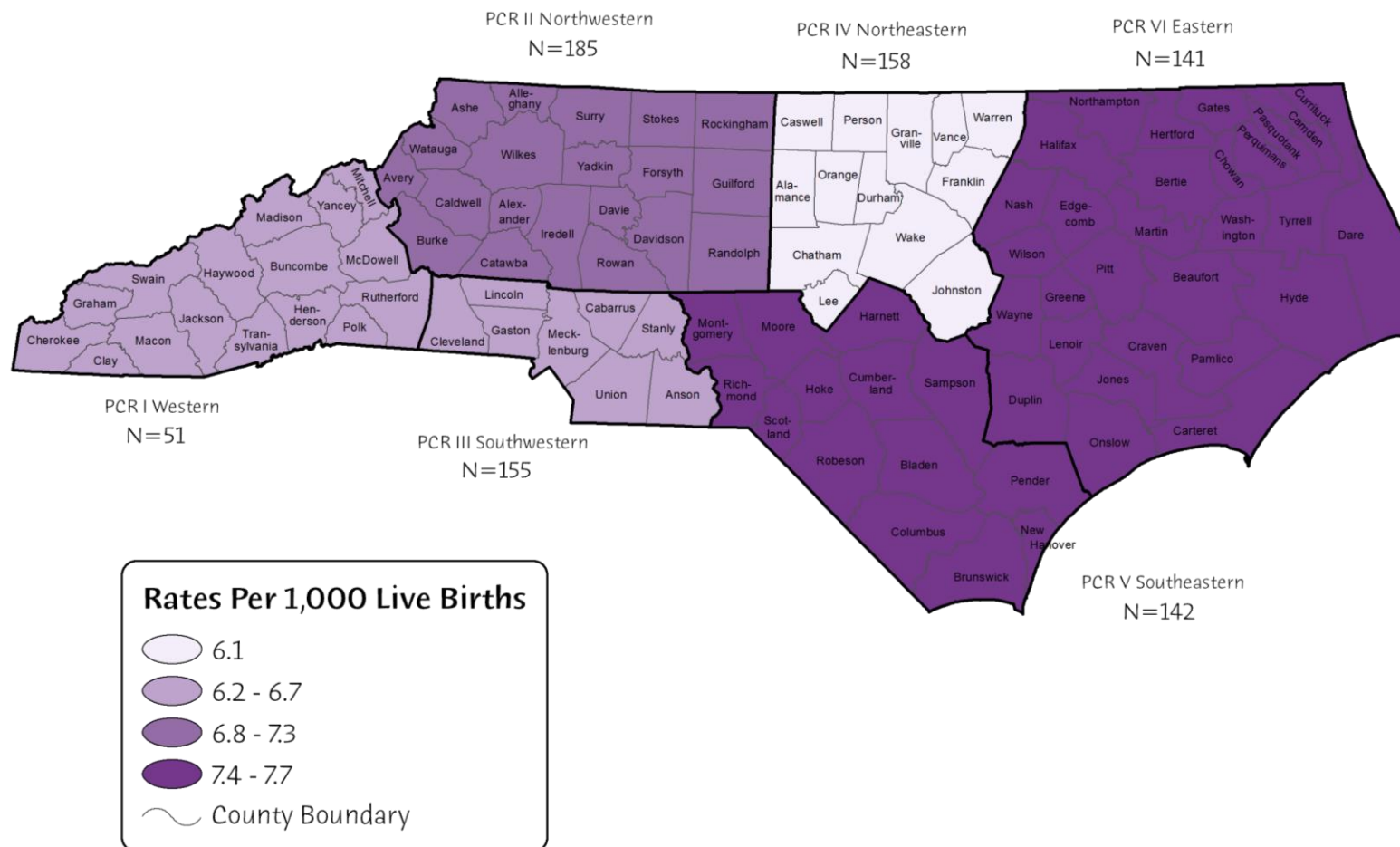
North Carolina Infant Mortality Rates 1994-2013



North Carolina Infant Mortality Rates by County 2009-2013



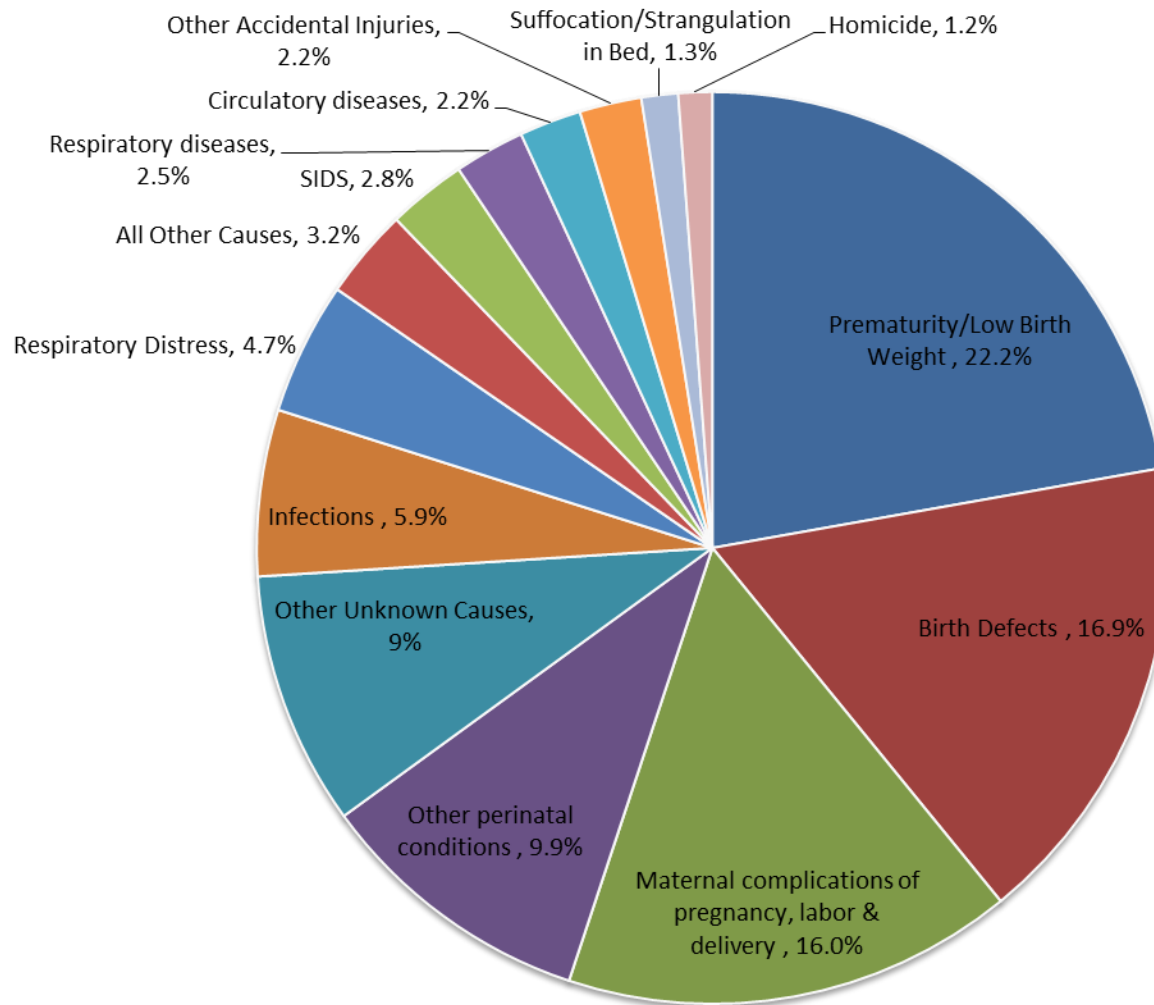
North Carolina Infant Mortality by Perinatal Care Regions





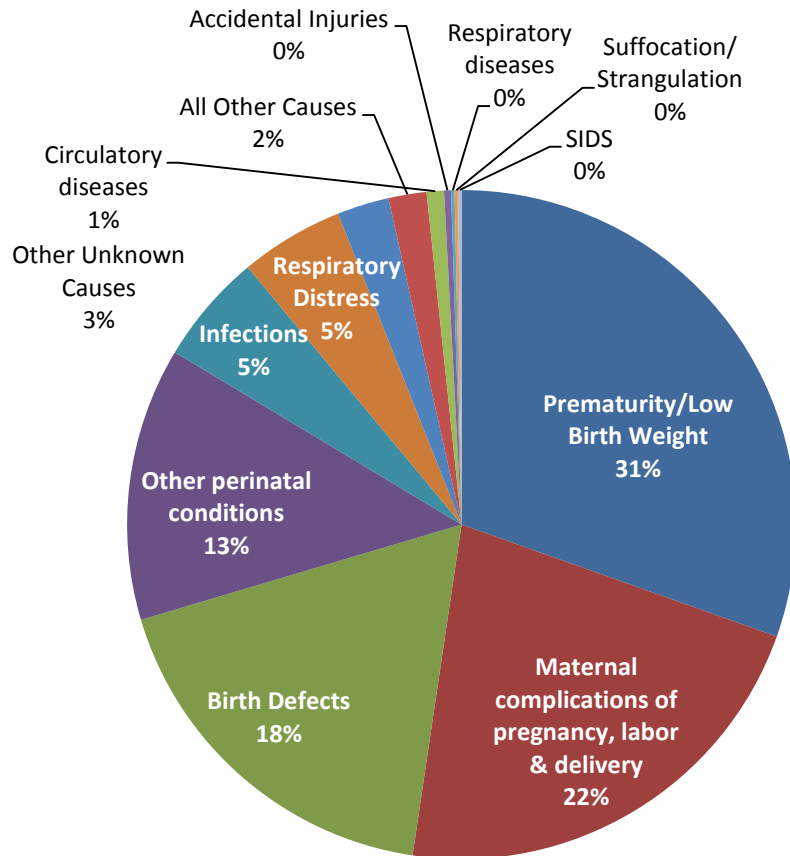
CAUSES OF INFANT MORTALITY AND MORBIDITY

Leading Causes of Infant Death North Carolina, 2013

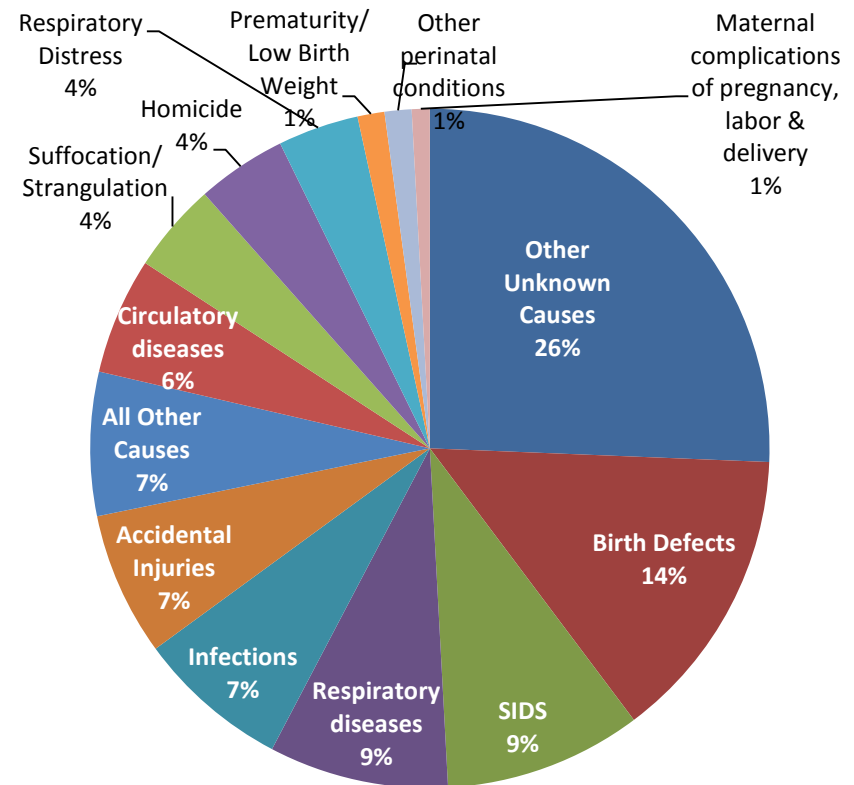


Leading Causes of Infant Death

Neonatal vs. Postneonatal, NC Residents 2013

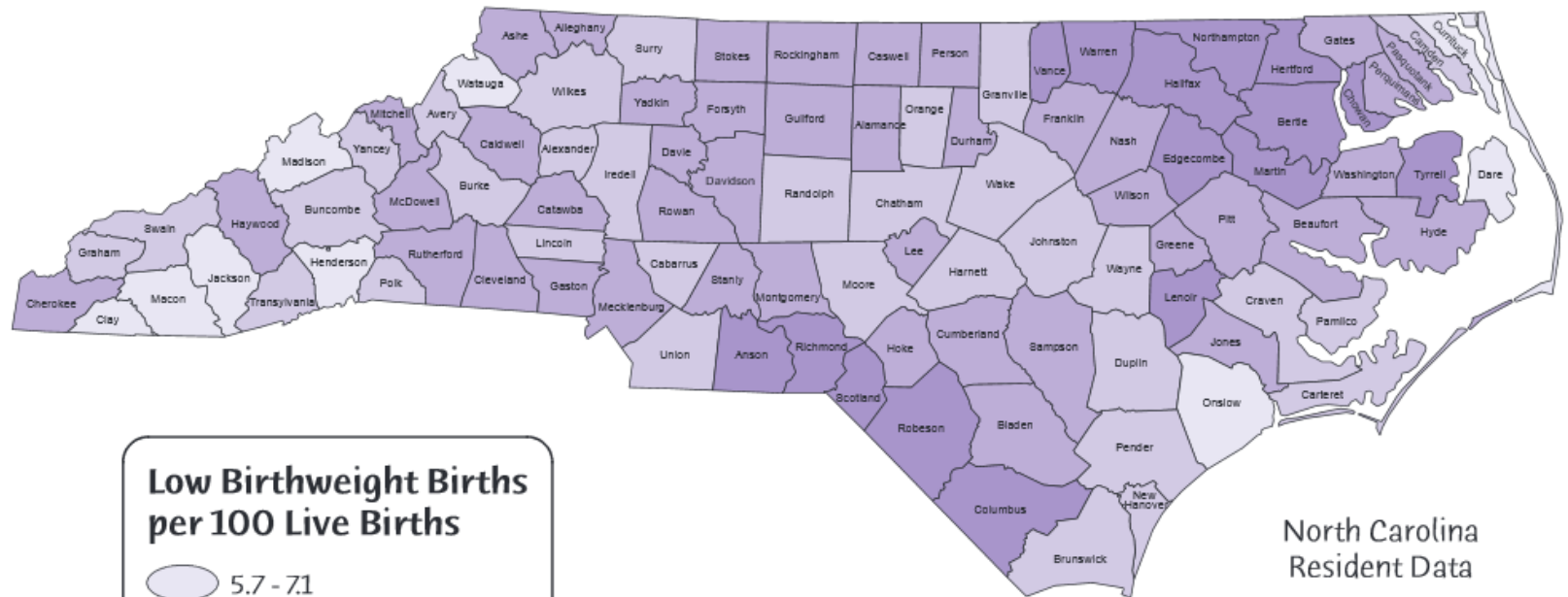


Neonatal



Postneonatal

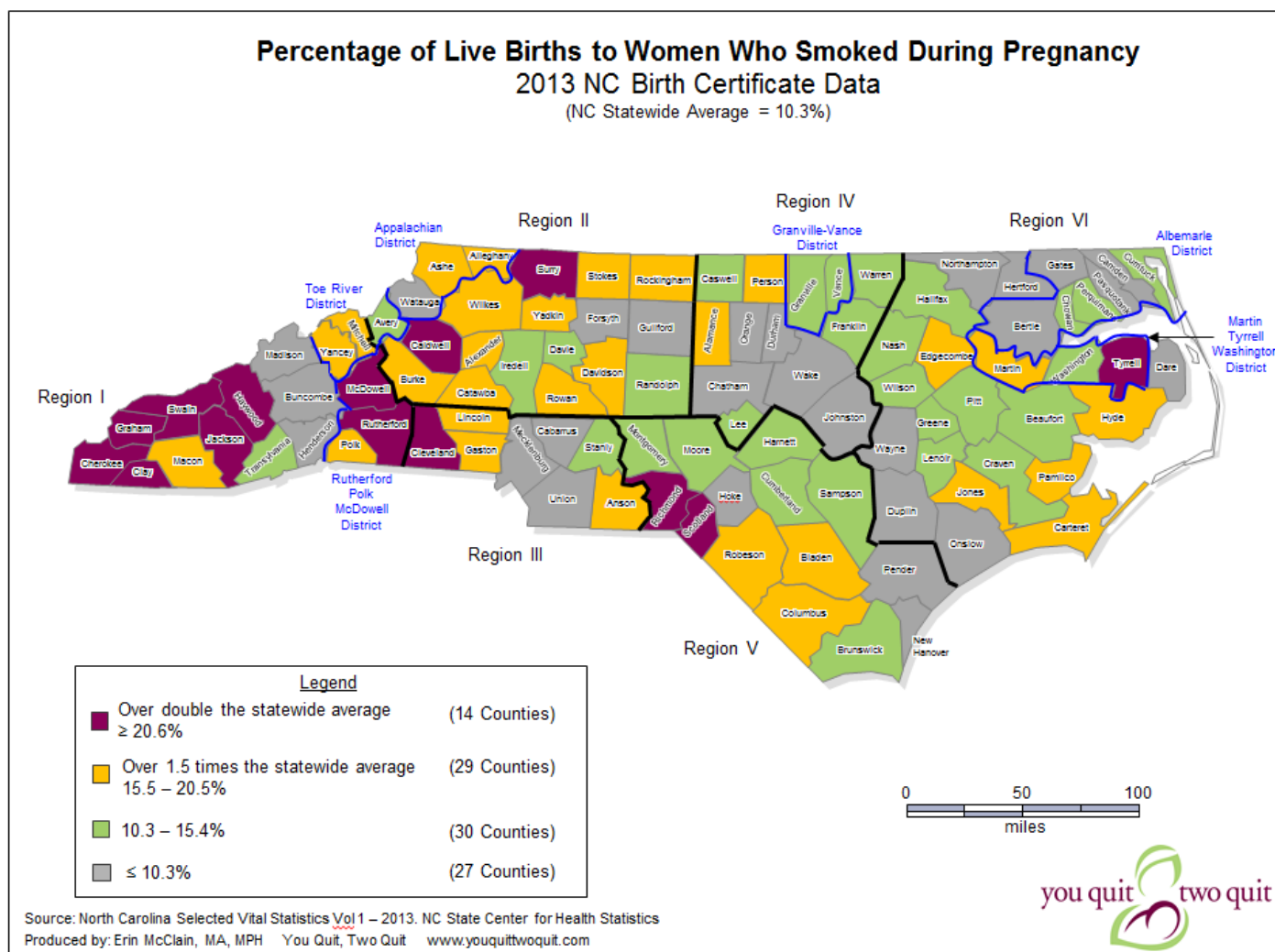
North Carolina Low Birthweight Rates 2009-2013



Modifiable Risk Factors Common to Congenital Conditions

Risk factor	Birth Defects	Preterm Birth	Low Birth Weight	Developm. disability
Nutrition status	X	X	X	
Insufficient folic acid/vitamin	X	X	X	X
Smoking	X	X	X	X
Alcohol use / abuse	X	X	X	X
Illicit drugs	X	X	X	X
Obesity	X	X	X	
Diabetes - gestational	X	X	X	
Infectious diseases	X	X	X	X
Selected medications	X	X	X	X
Psycho-social stressors		X		
Environment and working activity	X	X	X	X

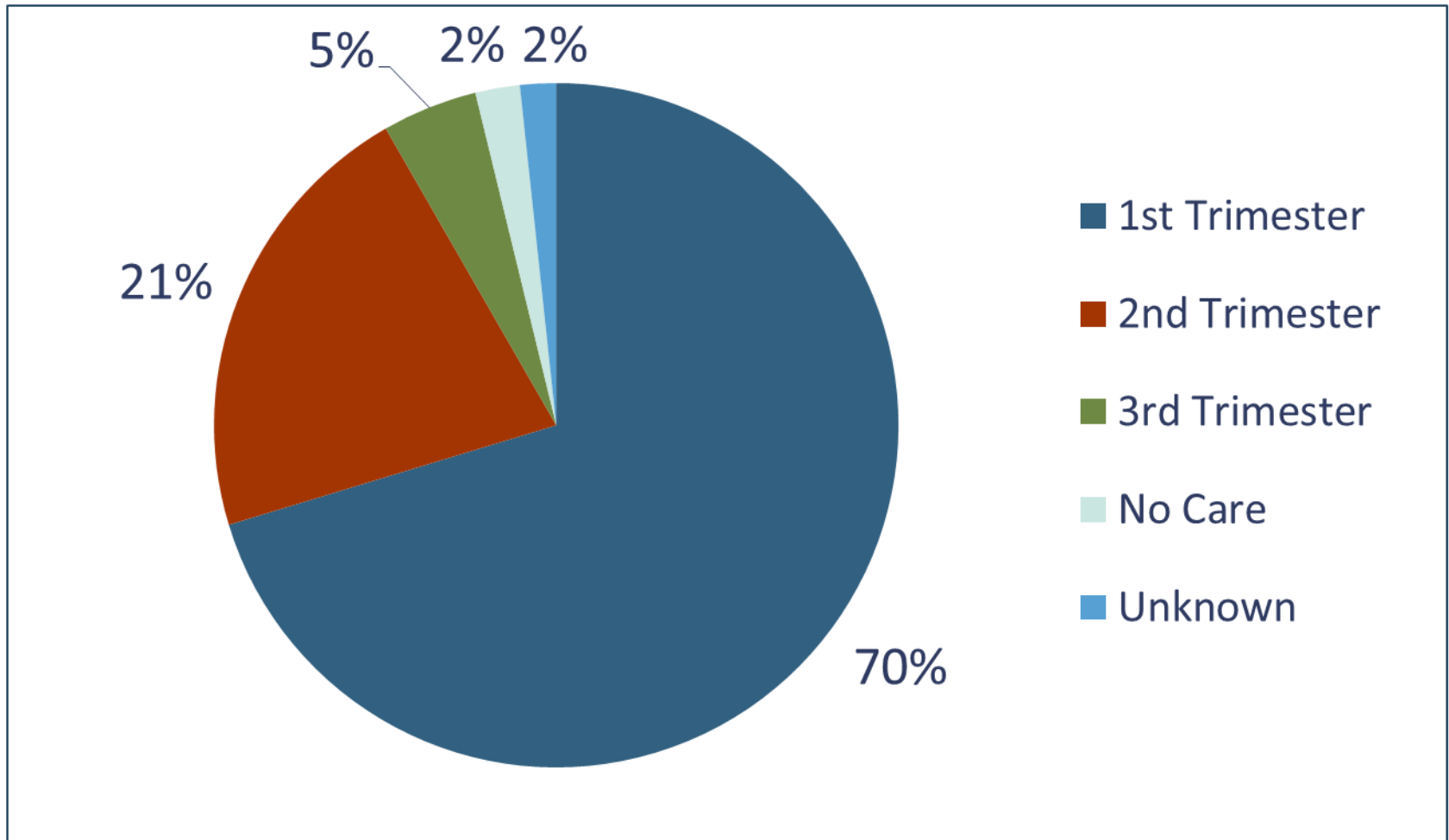
Percentage of Live Births to Women Who Smoked During Pregnancy





PROTECTIVE FACTORS

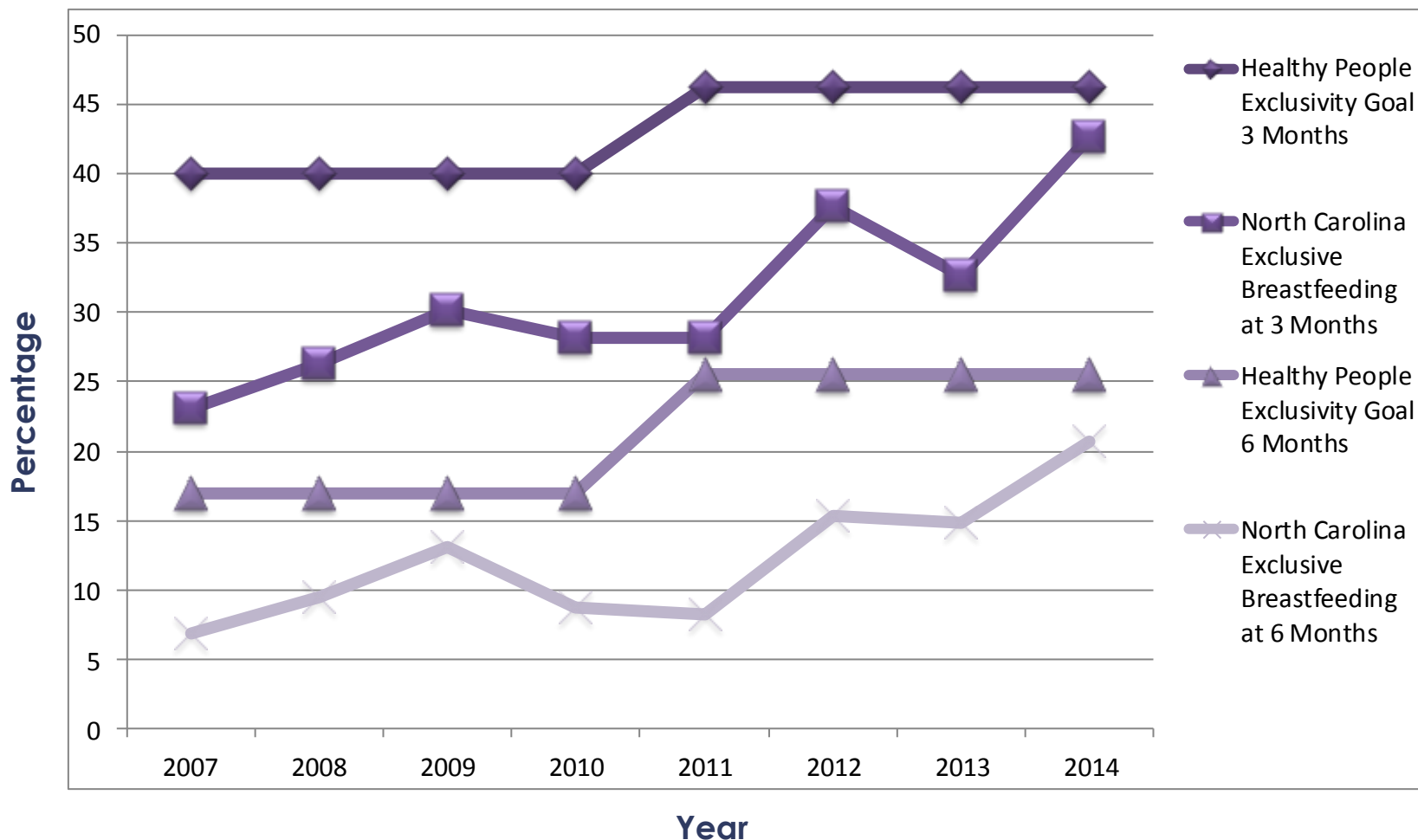
2013 North Carolina Resident Births: Trimester Prenatal Care Began



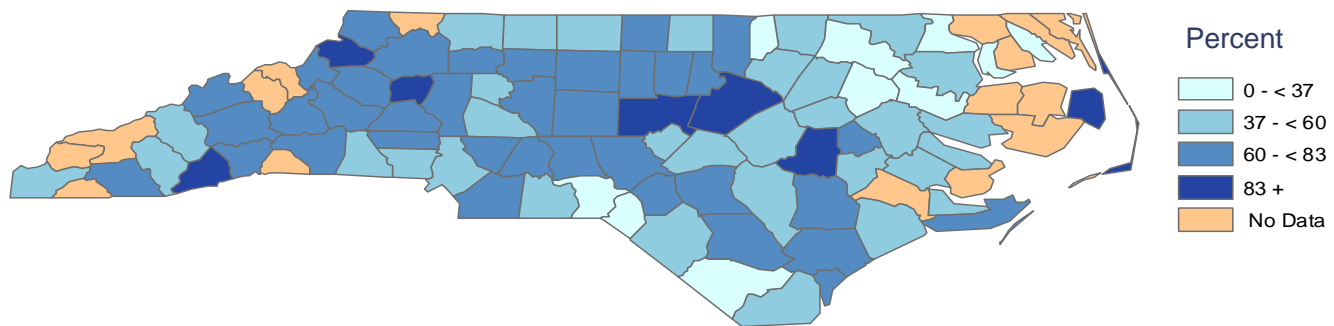
Centers for Disease Control and Prevention (CDC) Breastfeeding Report Card

Objective	Healthy People 2020 Goal	Nation 2014 (%)	North Carolina 2010 (%)	North Carolina 2011 (%)	North Carolina 2012 (%)	North Carolina 2013 (%)	North Carolina 2014 (%)
Ever Breastfed	81.9 %	79.2	73.5	67.3	68.2	74.9	77.2
Breastfeeding at 6 months	60.6 %	49.4	35.9	37.0	38.3	48.5	48.3
Breastfeeding at 12 months	34.1 %	26.7	19.4	19.6	20.8	31.9	24.5
Exclusive breastfeeding at 3 months	46.2 %	40.7	28.2	28.1	37.6	32.7	42.6
Exclusive breastfeeding at 6 months	25.5 %	18.8	8.7	8.2	15.3	14.8	20.7

North Carolina Breastfeeding Trends 2007-2014



Percentage of Infants Ever Breastfed by County

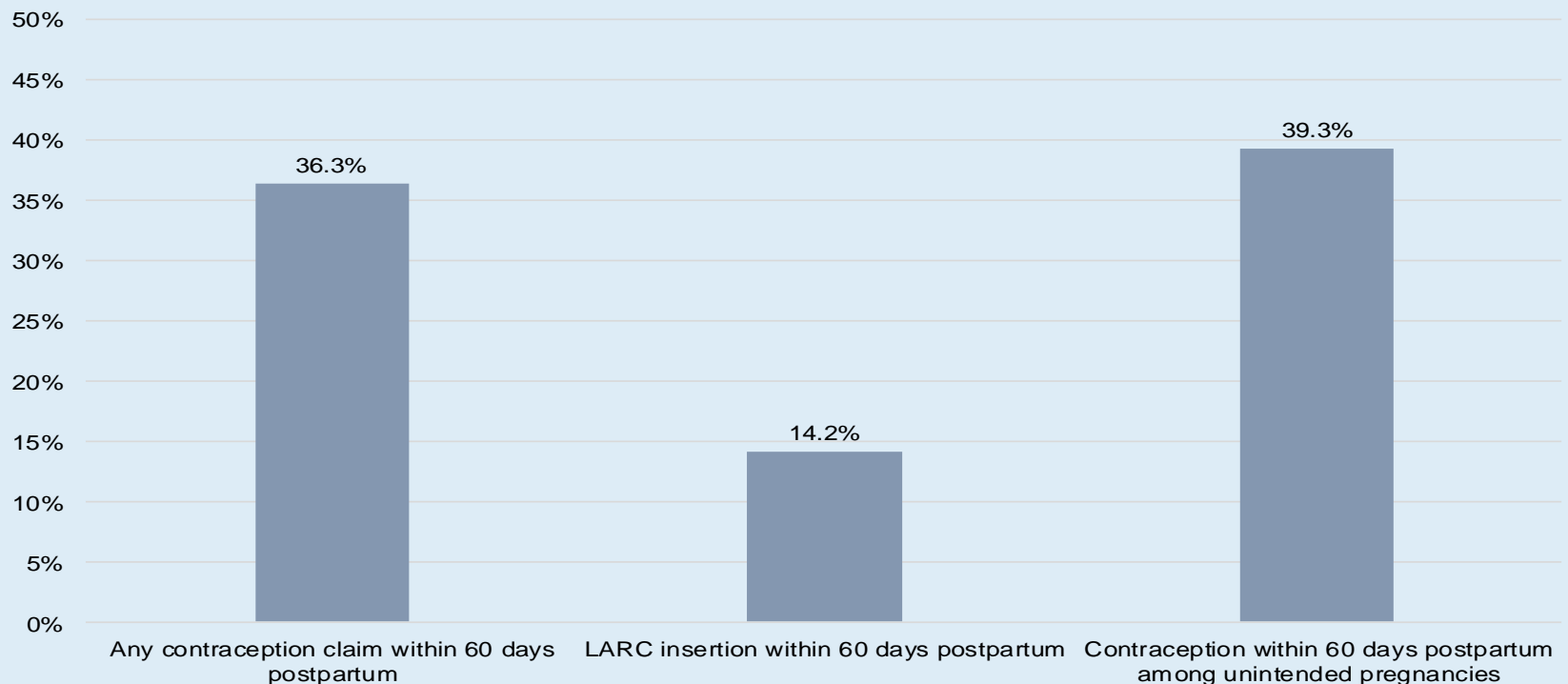


* Among infants born during the reporting period.

2011 NC PedNSS Table 7B

Contraception in the Postpartum Period among Medicaid Patients

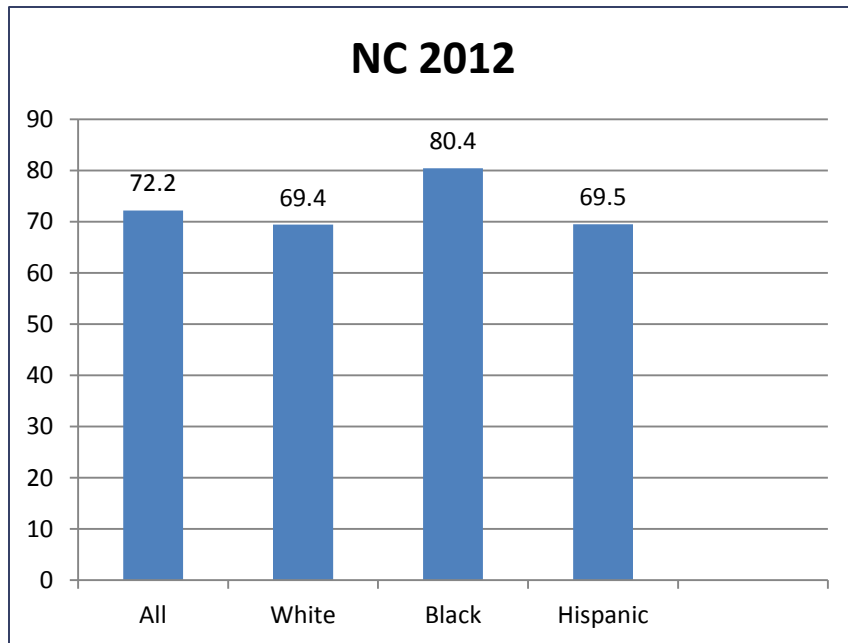
Receipt of contraception* in the postpartum period among Medicaid patients who received care in a Pregnancy Medical Home, 2012



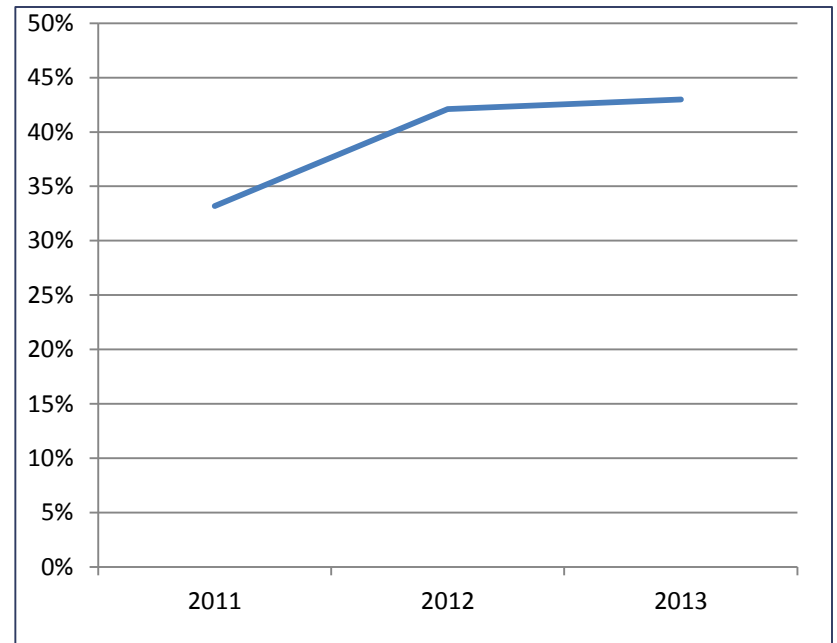
*Based on paid claims for contraceptive methods, excluding any patient with a history of sterilization; LARC methods are only included if there is a paid claim for the insertion of the device.

Women's Preventive Health

Women (18-44) who had a routine checkup in the past year



Women (18-44) who took a multivitamin, prenatal vitamin, or folic acid supplement every day



What Works for Healthy Mothers and Infants?

- Evidence-based and evidence-informed solutions to these problems exist
- Important to implement solutions that fit our context
- Monitoring and evaluating progress is key to success

Processes for Priority Setting

- **Considerations**
 - Number of people affected
 - Severity
 - Effectiveness of interventions
 - Return on Investment
- Tools and processes have been used in many other states and communities

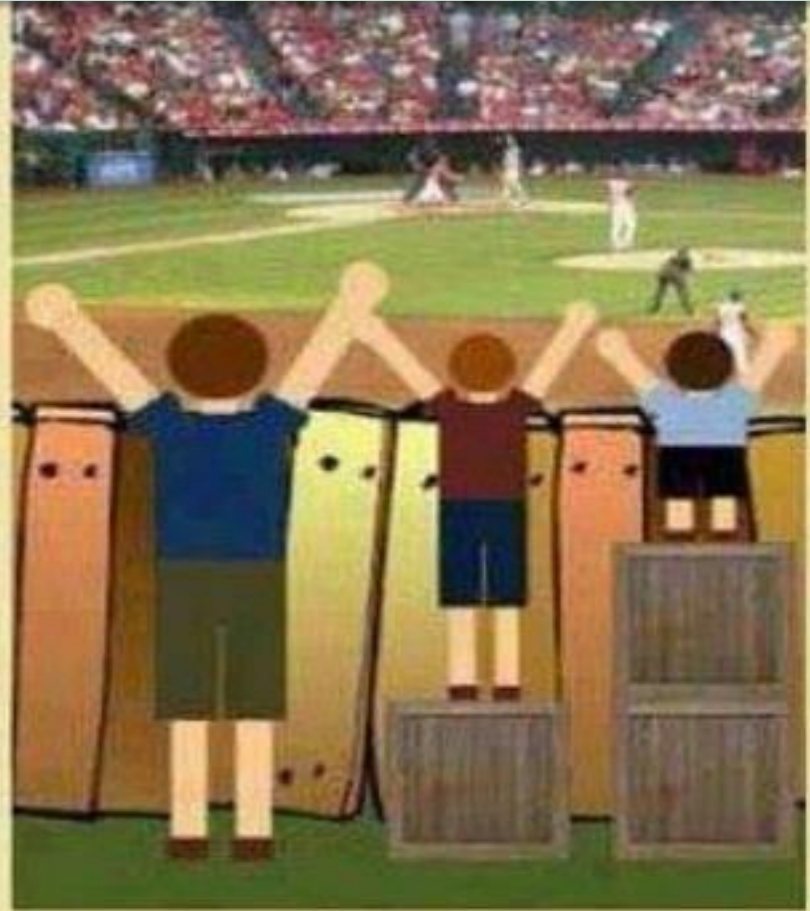
Closing Comments

- **North Carolina ranks 40th among all 50 states in infant mortality**
- **Improving maternal and infant health outcomes requires partnerships**
- **We have examples of successful programs and policies**
- **Sustained and consistent effort will be needed to improve birth outcomes and eliminate disparities**

Interventions may need to be different to achieve desired outcomes for all



This is Equality



This is EQUITY

Acknowledgements

- **NC Department of Health and Human Services'
Division of Public Health and State Center for
Health Statistics**



For More Information

Contact:

Dorothy Cilenti, DrPH, MPH, MSW

cilenti@email.unc.edu



UNC

GILLINGS SCHOOL OF
GLOBAL PUBLIC HEALTH